



YOUR FREE QUICK CRAFTS DOWNLOAD PACK

prints that add a and by Scissors pass be ic pencil on and eter
ay to the fabric before y edges rashing of yarn
ORE START A DRAFTING OR CIRCLE TO CUT THE IST BE SURE TO

DESIGNER CORINNE BRADD

Crochete Floral Coas

Dress up your table with flow oddments of fabric and

1 To make the fabric centres, cut an 11cm circle from patterned and plain fabrics and pin RS tog onto wadding. Sew through all three layers, 5mm from the edge and leaving a 4cm gap for turning. Trim the wadding close to the seam line, turn RS out and press. Fold in the raw edges of the gap (you can use a little glue here).

2 Using a sharp needle and double thickness of matching thread, sew a neat blanket stitch evenly around the edge of the disc. Keep the stitches about 4mm apart and aim for an even number of around 70 stitches in total.

3 Using 3mm hook and lovely Latte, join yarn to a blanket stitch

Rnd 1: 1ch (does not count as st throughout), 1dc loosely in top of each blanket st sl st in first dc to join md Change to Sunny Yellow (Peachock Green, Coral Pink), joining with 1dc in any st

Rnd 2: (3ch, miss one st, 1dc) to last st, 3ch, miss one st, sl st in first st

Rnd 3: (5tr in 3ch sp for shell, 1dc in next 3ch sp) to end, 3ch, sl st in third of 5tr shell

Rnd 4: (3ch, miss two sts, 1dc, 3ch, sl st in third tr of shell) to end, 3ch, miss two sts, sl st in next st



TOP TIP! TAKE CARE TO SPACE OUT YOUR BLANKET STITCHES EVENLY BY MAKING TWO MARKS ON YOUR THUMB, AND MEASURING IT FROM YOUR PREVIOUS STITCH EACH TIME

DESIGNER SARA

DONE IN A DAY

★ Really Wild papers
★ Card: white, orange, pink
★ Dies: 8cm circle
★ Bone folder
★ 3D foam pads
★ Embellishments: mini bows, 6mm coloured adhesive gems
★ Glue
★ Scissors

the CRAFTS CHANNEL

LEARN NEW CRAFTING TECHNIQUES AT youtube.com/thecraftschannel

We say "You can print these papers as many times as you like, so experiment and enjoy!"

BEFORE YOU START

WHILE NOT ESSENTIAL, A BONE FOLDER WILL MAKE SCORING YOUR CARDS FAR EASIER AND NEATER

DESIGNER SARA

Really Wild

Craft these gorgeous downloadable papers



U-FOLD

1 Cut white card to 13.5cm x 23cm, then score down from the long edge at 3cm, 6cm, 17cm and 20cm. Mountain fold the outer score lines and valley fold the inner score lines to create a U-fold blank.

2 Layer orange card on the centre and outer panels.

3 Adhere two vertical sections of tree paper, 2.5cm x 13cm, to the inner side panels. Trim white card, 3.5cm x 17cm, then matt with orange card and patterned paper. Secure across the card front towards the bottom of the outer panels.

4 Die cut an 8cm circle onto orange, then snip the LH side and attach to the left of the central panel with 3D

5 Trim and fix to the side with a pillar box with a

PIL!

1 Do the websi out. l cut a a pilli black term trim pap and sma arax 2.1 sea

DESIGNER CAROLYN

DONE IN A DAY

★ Wool felt: red, two shades; green, four shades; yellow; pink, two shades; peach; purple; grey, dark; grey, speckled
★ Florist's wire
★ Kitchen paper
★ Green florist's tape
★ Glue gun
★ Flat-nosed pliers
★ Scissors
★ Ribbon
★ Hand felting needle

the CRAFTS CHANNEL

LEARN NEW CRAFTING TECHNIQUES AT youtube.com/thecraftschannel

We say "We love the varied shapes in this bouquet and how the leaves give added height"

BEFORE YOU START

YOU ONLY NEED TO DO A LITTLE HAND STITCHING TO MAKE THIS BOUQUET

DESIGNER CAROLYN

Felt Bou

Show someone you this gorgeous display o

NOTE: Have the templates ready to cut your leaves, stamens and petals to shape.

RED ROSE

1 Take a length of wire and use the pliers to turn one end into four small, concentric circles, then bend at a 90° angle to the stem. Take kitchen paper, 1.5cm wide, and screw it up into a teardrop shape. Glue the bottom onto the top of the wire.

2 Cut two circles, 10cm in diameter, from two shades of red felt. Fold the darker shade in half, then snip along the fold line leaving 5mm uncut in the middle. With the felt still folded, trim twice from the curved edge to the middle, 5mm away from the fold.

3 Unfold to reveal six equal sections. Cut the corners from each section into petals. Snip a tiny hole into the uncut middle of the circle. With the wire from step one and push it into the middle. Glue around the underside of the flat wire and push the red felt against it.

4 Take two opposite petals, glue the inside bottom of one and two-thirds up one side, then press it to the paper stump. Repeat with the second petal but the opposite side. Repeat for the remaining four, overlapping in the same direction all the way around. Leave the tops of the petals unglued, and ensure that the stump is covered.

5 Take the second red circle and repeat the above process, but only cutting it into four sections, then shape the corners into petals. Push it onto the wire and to the base

other side, then overlap in the same direction.

6 Pull the top of each petal as if you were trying to tear it - this will give them a 3D look. Cut the wire to your chosen length and cover it with green tape. Snip dark green felt, 3cm x 4.5cm, then cut 2mm strips along the length.

MAKE ME ON DAY 4

TEMPLATE TURN TO PAGE 142



DONE IN A DAY



KIT LIST

- ★ Wool felt: red, two shades; green, four shades; yellow; pink, two shades; peach; purple; grey, dark; grey, speckled
- ★ Florist's wire
- ★ Kitchen paper
- ★ Green florist's tape
- ★ Glue gun
- ★ Flat-nosed pliers
- ★ Scissors
- ★ Ribbon
- ★ Hand felting needle

the
CRAFTS
CHANNEL

LEARN NEW CRAFTING
TECHNIQUES AT
[youtube.com/
thecraftschannel](https://www.youtube.com/thecraftschannel)

We say
"We love the varied
shapes in this
bouquet and how
the leaves give
added height"

BEFORE
YOU START

YOU ONLY NEED TO DO A
LITTLE HAND STITCHING TO
MAKE THIS BOUQUET

DESIGNER **CAROLYN LETTEN**

Felt Bouquet

Show someone you care with
this gorgeous display of tactile florals

NOTE: Have the templates ready to cut your leaves, stamens and petals to shape.

RED ROSE

1 Take a length of wire and use the pliers to turn one end into four small, concentric circles, then bend at a 90° angle to the stem. Take kitchen paper, 1.5cm wide, and screw it up into a teardrop shape. Glue the bottom onto the top of the wire.

2 Cut two circles, 10cm in diameter, from two shades of red felt. Fold the darker shade in half, then snip along the fold line leaving 5mm uncut in the middle. With the felt still folded, trim twice from the curved edge to the middle, 5mm away from the fold.

3 Unfold to reveal six equal sections. Cut the corners from each section into petals. Snip a tiny hole into the uncut middle of the circle, then take the wire from step one and push it into the middle. Glue around the underside of the flat wire and push the red felt against it.

4 Take two opposite petals, glue the inside bottom of one and two-thirds up one side, then press it to the paper stump. Repeat with the second petal but the opposite side. Repeat for the remaining four, overlapping in the same direction all the way around. Leave the tops of the petals unglued, and ensure that the stump is covered.

5 Take the second red circle and repeat the above process, but only cutting it into four sections, then shape the corners into petals. Push it onto the wire and to the base of your last piece. Glue each petal, inside, two-thirds down one side and one-third of the



TEMPLATE
TURN TO
PAGE 142



other side, then overlap in the same direction.

6 Pull the top of each petal as if you were trying to tear it – this will give them a 3D look. Cut the wire to your chosen length and cover it with green tape. Snip dark green felt, 3cm x 4.5cm, then cut 2mm strips along the length, leaving 5mm uncut. Wrap it around the underside of the rose, arrange the strips and glue.

7 Cut 11cm of wire, twist it around the rose stem and cover with tape. Cut two leaves from green felt, and glue to the ends of the wire.

PINK PEONIES

1 Make a stem like you did with the rose, then cover it with tape. Cut the stamen from bright green felt, add a dot of glue to the widest part of each, then fold the sides in half. Glue the flat

TOP TIP!

THERE ARE MANY FLOWERS TO CREATE FOR THIS MAKE, SO IT MIGHT TAKE MORE THAN A DAY TO DO! IF YOU ONLY HAVE TIME TO MAKE A COUPLE OF FLOWERS, WHY NOT TURN THEM INTO A BROOCH OR ADD TO A HAIR CLIP?

underside of all four stamen petals and secure them to the top of the wire. Cut yellow felt, 3cm x 12.5cm, snip it at 3mm intervals, leaving a border at the bottom. Glue the border and secure where the stamen meets the wire.

2 Cut 20 petals: five from deep pink felt and 15 from a lighter shade. Hand-sew running stitch across the straight bottom edge of the petals, starting with the darker ones. Pull until the flower measures 18cm, then secure. Make sure the petals are the right way up and overlap in the same direction.

3 Starting with the darker petals, glue around the bottom of the yellow centre. Cut a circle from green felt, 9.5cm in diameter, in the same way as the rose to make six leaves. Push onto the stem and glue in place.

4 To create the peach peony, repeat as above, but add an extra seven petals in a lighter shade. To make a bud peony, repeat again, except cut five petals in dark pink and ten in a paler shade. Before you sew the petals into a line, cut a 5mm slit in the middle at the top of each petal. Cross the two sides over and secure with glue. Finish as before, but with an 8.5cm circle of green felt.

LEAVES

1 Cut one leaf and a central vein from bright green felt. Take a length of wire and curve it to fit, then glue the vein in place to cover the wire. Cut the separate fronds, then go back over them with scissors, making points at the ends and re-shaping them. Cover the stem with tape.



2 Snip seven leaves from two shades of green felt. Cover a length of wire with tape. Stitch a single leaf to the top of the wire, then glue the others in pairs so they overlap each other.

3 Cut seven leaves from two shades of green felt. Cover a length of wire with tape. Starting at the top of the wire, put a dot of glue in the middle bottom of the first leaf, lay the wire on top, and pinch to secure. Repeat with the remaining leaves so that they overlap.

4 Cut 14 leaves for two stems. Cover two lengths of wire with tape. Attach the first leaf as you did in step three, then glue the middle bottom of each leaf and pinch together. Stick two leaves together side by side, trapping the wire in between. Repeat as above for a second stem, except cut notches into the leaf edges.

PURPLE ANEMONE

1 Take a piece of wire and turn the top with pliers. Cut a circle from grey felt, 3cm in diameter, hand-sew running stitch all around the edge, then pull and secure. Glue the gathered bottom edge on top of the wire.

2 Cut a piece from speckled dark grey felt, 2cm x 20cm, and snip all the way along it at 4mm intervals, leaving a 5mm border. Glue around the border, and stick it around the edge of the grey piece. Glue tiny pieces of pale green felt in between the grey ones.

3 Cut four inner petals from your chosen felt, then cut four outer ones in a darker shade. Glue the bottom of the front of the inner petals, and secure them to the edge of the speckled grey centre. Repeat with the outer petals. Cover the stem with florist's tape.

4 Place the flower upside down, and measure the diameter of the head base. Cut a circle of green felt which is slightly bigger, snip a hole in the middle, fold in half, and cut along the fold - from the middle of the curved edge to the snip. Shape each section like you did with the red rose, then push it onto the wire and glue at its base.

BUDS

To make the buds, cut a 20cm strip of felt 3cm wide. Roll it up tightly then use a hand felting needle to felt all the layers together by repeatedly stabbing up and down the bud. Pay particular attention to the top and bottom. Continue until you can no longer see individual layers of felt. Cut a length of florist's wire, curl one end round and attach with a glue gun to the bottom of your felted bud.

DONE IN A DAY



KIT LIST

- ★ Precious metal clay
- ★ FIMO soft polymer clay: vanilla, rose
- ★ Round pearl beads: 10mm, four; 12mm, 13
- ★ Iridescent powder: green, pink
- ★ Bead caps, 7mm
- ★ Head pins
- ★ Toggle clasp
- ★ Jump rings, 7mm
- ★ Rose leaf cutter
- ★ Hobby drill
- ★ Sewing needle and thread
- ★ File
- ★ Buffing pad
- ★ Firing brick
- ★ Side cutters
- ★ Ruler
- ★ Round-nosed pliers
- ★ Blowtorch
- ★ Wire brush
- ★ Burnisher
- ★ Adhesives
- ★ Washing up liquid
- ★ Knife
- ★ Wire cutters
- ★ Soft paintbrush
- ★ Cocktail stick

12

*We say
"Use strong jump
rings to withstand
the constant use
and weight"*

BEFORE YOU START

YOU CAN BUY HOBBY BLOWTORCHES FROM CRAFT SHOPS FOR JEWELLERY MAKING, AND THEY'LL ALSO BE USEFUL FOR ENGRAVING, PYROGRAPHY AND RESINWORK

DESIGNER **ELLEN KHARADE**

Polymer Clay Rose Jewellery

Take inspiration from beautiful country house gardens with these floral trinkets



NECKLACE

- 1** Roll out a small amount of metal clay to a thickness of 2mm. Using a leaf cutter, cut out four shapes and make a hole in the top of each using a cocktail stick. Slightly twist two of the leaves. Allow the pieces to dry out for several hours, then file the edges smooth.
- 2** Place the leaves onto a firing brick and move a

blowtorch over them. They'll smoke at first, but this is OK. Keep the leaves glowing for 2-3 minutes to ensure a good fire.

Once cool, dip a wire brush into washing-up liquid and rub away the white coating until the silver beneath is revealed. Polish the leaves to

a high sheen with a buffing pad and burnisher.

- 3** While the leaves are drying you can make the roses. Condition half a block of

TOP TIP! YOU CAN SOFTEN HARD AND CRUMBLY POLYMER CLAY BY WARMING IT SLIGHTLY – JUST DON'T WARM IT SO MUCH THAT IT STARTS TO CURE!

vanilla clay until soft, roll out a small sausage and flatten with a rolling pin. Roll to form a small coil. Flatten a ball of vanilla clay between your thumb and finger to make a petal shape. Thin out one edge with your fingers, then wrap the petal around the coil, ensuring the seam is covered.

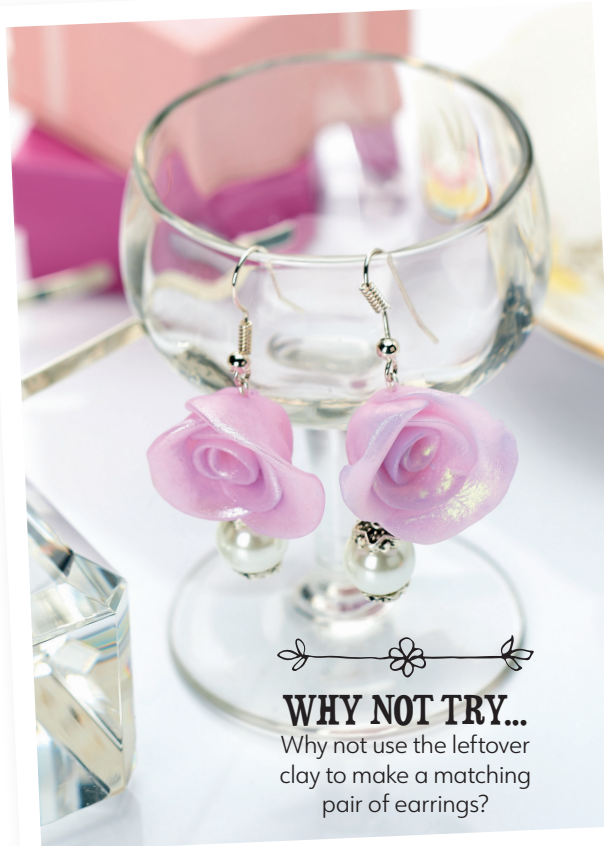
4 Make another vanilla petal and place on the seam of the second petal, wrapping around to build up a rose shape. Add the third and fourth petals in the same way, pinching them slightly. Make the rose about 4cm in size, cutting off any excess clay as close to the base as possible. Make another three vanilla roses roughly 2.5cm in size.

5 Dust the large rose and one small rose with green iridescent powder and the others with pink. Make three



GLAMOUR ON THE GO

13



WHY NOT TRY...

Why not use the leftover clay to make a matching pair of earrings?

more small roses from rose coloured clay and dust with pink iridescent powder. Bake the pieces according to the manufacturer's instructions. Once cool, make small holes through the base of each rose using a hobby drill.

6 Thread the large rose onto a head pin, trim both ends to size and turn into neat loops. Thread a bead cap onto a head pin, followed by a 12mm pearl bead, then another bead cap. Trim both ends to size and turn into neat loops. Repeat for another seven 12mm pearls and four 10mm pearls. Thread the remaining roses onto head pins and turn into loops.

7 Attach the larger pearl beads and roses together by their head pins, making sure that there's a pearl between each rose. Add two smaller pearl beads to each end followed by jump rings and a toggle clasp. Thread

the silver leaves onto jump rings and attach at even intervals along the necklace.

BRACELET

1 Make up three silver leaves from metal clay, as for the necklace. Create three 2cm vanilla roses and one 2cm pink rose as before. Dust two of the vanilla roses with green iridescent powder and the remaining ones with pink powder. Bake according to the manufacturer's instructions and make holes through the bases, as before.

2 Thread the roses and five pearls with bead caps onto head pins and turn into neat loops. Attach the roses and pearls together by their head pins, making sure there's a pearl between each rose. Add jump rings to each end and attach a toggle clasp. Thread the silver leaves onto jump rings and attach along the bracelet at even intervals.

DONE IN A DAY



KIT LIST

- ★ Really Wild papers
- ★ Card: white, orange, pink
- ★ Dies: 8cm circle
- ★ Bone folder
- ★ 3D foam pads
- ★ Embellishments: mini bows, 6mm coloured adhesive gems
- ★ Glue
- ★ Scissors

the
CRAFTS
CHANNEL

LEARN NEW CRAFTING TECHNIQUES AT
[youtube.com/
thecraftschannel](https://youtube.com/thecraftschannel)

16

We say
"You can print
these papers as
many times as you
like, so experiment
and enjoy!"

BEFORE YOU START

WHILE NOT ESSENTIAL,
A BONE FOLDER WILL MAKE
SCORING YOUR CARDS
FAR EASIER AND NEATER

DESIGNER SARAH JACKMAN READ

Really Wild Cards

Craft these gorgeous greetings using our downloadable papers designed by Mia Dunton



U-FOLD

1 Cut white card to 13.5cm x 23cm, then score down from the long edge at 3cm, 6cm, 17cm and 20cm. Mountain fold the outer score lines and valley fold the inner score lines to create a U-fold blank.

2 Layer orange card on the centre and outer panels. Cut giraffe paper, 10cm x 12.5cm, then adhere to the central panel. Trim two more pieces, 2cm x 12.5cm, and fix to the outer panels.

3 Adhere two vertical sections of tree paper, 2.5cm x 13cm, to the inner side panels. Trim white card, 3.5cm x 17cm, then matt with orange card and patterned paper. Secure across the card front towards the bottom of the outer panels.

4 Die cut an 8cm circle onto orange, then snip the LH side and attach to the left of the central panel with 3D foam pads. Cut out *Thank you* and stick to the front with 3D foam pads.

5 Trim a zebra, tree and antelope, then fix to the LH side with 3D foam pads. Add a mini bow under the zebra and finish with adhesive gems.

PILLOW BOX

1 Download the template from our website and print it out. Use it to draw, cut out and score a pillow box from black card. Use the template again to trim leopard print paper for the back and front, leaving a smaller border all around, then adhere in place.

2 Trim striped paper for the end panels and secure. Attach the sides together, then fold the ends to create the box. Cut out a 3cm strip of striped paper

and adhere across the centre. Trim *You're a wild one* and fix on top with 3D foam pads. Add a mini bow underneath, then finish with adhesive gems.



TEMPLATE
SEE 100DAYS
OF CRAFTS.
COM

DIAMOND EASEL

1 Use the template online to draw, cut out score and fold a diamond easel blank from white card. Trim another piece of white card, 9cm square, then layer pink card on top.

2 Cut zebra paper to 8cm square, adhere to the square, then stick to the card front. Trim our 'Wild about you' sentiment and fix to the square with 3D foam pads.

3 Layer leopard paper, 8cm square, onto pink card, then adhere to the base panel. Trim zebra paper, 5.5cm square, diagonally to form two triangles. Matt onto pink card, then secure to the base panel.

4 Trim two contrasting papers, 6cm x 12.5cm and adhere to the other panels. Attach a mini bow 4.5cm in from the point of the base panel, then tuck the front behind it. Finish with adhesive gems.



WHY NOT TRY?

Why not use the papers to create a coordinating envelope for your card?



5-MINUTE MAKE

1 Matt a 14.5cm square top-folding white blank with pink card. Adhere leopard print paper on top. Fix zebra paper, 7cm x 14cm, across the centre. Stick leopard paper, 4cm x 14cm, down the LH side.

2 Cut out our *Happy Birthday* sentiment following the sketchy outline. Attach to the LH side with 3D foam pads. Add a mini bow next to it, then finish with adhesive gems.



"I love U-fold cards - they look truly special on a mantelpiece. Plus, they fold flat for posting!"

SARAH JACKMAN READ
DESIGNER

Crocheted Floral Coasters

Dress up your table with flowers using oddments of fabric and yarn

KIT LIST

- ★ DK yarn: Lovely Latte, Sunny Yellow, Peacock Green, Coral Pink
- ★ Fabric, various prints and plain
- ★ Crochet hook, 3mm
- ★ Wadding
- ★ Sewing needle and thread
- ★ Tapestry needle
- ★ Pins
- ★ Scissors
- ★ Drafting compass (optional)
- ★ Tape measure
- ★ Fabric pencil
- ★ Adhesive
- ★ Iron and ironing board

Coaster: 15cm diameter

20

*We say
"Make up the floral fabric centres before crocheting edges in a contrasting colour of yarn"*

BEFORE YOU START

YOU CAN USE A DRAFTING COMPASS OR CIRCLE TEMPLATE TO CUT THE CENTRES – JUST BE SURE TO ADJUST THE CROCHET STITCH COUNT IF THE FABRIC CIRCLE IS A DIFFERENT SIZE

1 To make the fabric centres, cut an 11cm circle from patterned and plain fabrics and pin RS tog onto wadding. Sew through all three layers, 5mm from the edge and leaving a 4cm gap for turning. Trim the wadding close to the seam line, turn RS out and press. Fold in the raw edges of the gap (you can use a little glue here).

2 Using a sharp needle and double thickness of matching thread, sew a neat blanket stitch evenly around the edge of the disc. Keep the stitches about 4mm apart and aim for an even number of around 70 stitches in total.

3 Using 3mm hook and Lovely Latte, join yarn to a blanket stitch

Rnd 1: 1ch (does not count as st throughout), 1dc loosely in top of each blanket st, sl st in first dc to join rnd Change to Sunny Yellow (Peacock Green, Coral Pink), joining with 1dc in any st

Rnd 2: (3ch, miss one st, 1dc) to last st, 3ch, miss one st, sl st in first st

Rnd 3: (5tr in 3ch sp for shell, 1dc in next 3ch sp) to end, 3ch, sl st in third of 5tr shell

Rnd 4: (3ch, miss two sts, 1dc, 3ch, sl st in third tr of shell) to end, 3ch, miss two sts, sl st in next st

Rnd 5: sl st to centre of 3ch sp, (1dc in next 3ch sp, 4ch) to end, sl st in first st Fasten off to and to make up, weave in all ends

TOP TIP! TAKE CARE TO SPACE OUT YOUR BLANKET STITCHES AROUND THE FABRIC CIRCLE EVENLY BY MAKING TWO MARKS ON YOUR THUMB, AND MEASURING IT FROM YOUR PREVIOUS STITCH EACH TIME

STASH BUSTER



"Work the foundation round of crochet loosely to prevent the edges curling up"

CORINNE BRADD DESIGNER

DONE IN A DAY



KIT LIST

- ★ Stamps: letters, flowers, leaves
- ★ Embossing powder, green
- ★ Ink pads: VersaMark, green
- ★ Paper, spotty red
- ★ Washi tape, green
- ★ Card, cream
- ★ Heat tool
- ★ Drafting compass (or circle die)
- ★ Plant pot, white
- ★ Adhesives
- ★ Scissors
- ★ Newspaper

*We say
"Always unplug
the heat gun
when it's not
being used or
when you leave
the room, to avoid
a fire hazard"*

BEFORE YOU START

EMBOSSED DESIGNS LOOK GREAT ON MANY SURFACES LIKE CARD, WOOD, CHINA AND ENAMEL – SEE IF YOU CAN FIND ANY ITEMS AROUND YOUR HOUSE THAT WOULD BENEFIT FROM SOME LOVELY MOTIFS

EASY
UPCYCLING
IDEA

DESIGNER **KEREN BAKER**

Decorated Enamel Herb Pot



Grow tasty or pretty plants in your home with this delightful embossed container

1 Cover your work surface with newspaper. Ink up the letter stamps using VersaMark, and carefully roll each one over the sides of the pot. Sprinkle embossing powder onto the lettering and heat set. Carefully move the heat gun over the design systematically until all the powder is melted. You'll see that once the powder begins melting

it runs ahead to the next area. Prevent overheated embossing (which looks matt and flat) by holding the heat gun 10cm from the design, and avoid under embossing (when the powder would just rub off) by heating it until it turns shiny – then you will know it has melted properly.

2 Press the ink pad along the lip of the pot to coat it. Sprinkle the embossing

powder over the area and heat to set – taking care as the pot will get very hot.

3 Stamp the flower and leaves onto cream card using green ink. Cut out two leaves and a flower. Trim a small circle from the red dot paper and adhere to the flower centre. Pleat a length of washi tape around the bottom of the pot, then stick the flower and leaves to it.



TOP TIP! TO PREVENT POWDER ADHERING IN THE WRONG PLACES, REMOVE DUST AND OILY MARKS AND WIPE THE AREA TO BE EMBOSSD WITH AN ANTI-STATIC PAD BEFORE STAMPING OR APPLYING EMBOSSING POWDER



DESIGNER **JILL ALBLAS**

Floral Candles

Decorate candles with pressed flowers for on-trend cottage-core chic

KIT LIST

- ★ White candle wax
- ★ Candle wick
- ★ Candle moulds: pillar, ball
- ★ Sticky tack or glue dots
- ★ Wooden skewer
- ★ Heatproof bowls
- ★ Saucepan
- ★ Pressed flowers
- ★ Découpage brush
- ★ Matt découpage glue

the
CRAFTS
CHANNEL

DISCOVER LOTS MORE CRAFTY IDEAS AT
[youtube.com/thecraftschannel](https://www.youtube.com/thecraftschannel)

24

We say
"Découpage glue is ideal for this - brush on a thin but even layer for good adhesion"



BEFORE YOU START

PRESSED FLOWERS ARE FRAGILE. USE TWEEZERS OR THE TIP OF A CRAFT KNIFE TO PICK THEM UP AND POSITION

1 Bring a half full saucepan of water to the boil then turn down to a gentle simmer. Tip wax pellets into a heatproof bowl then place on top of the saucepan of simmering water. Don't overfill the bowl - half full is the maximum.

2 Whilst the wax is melting, thread a wick up through a candle mould, securing it at the tip with sticky tack. It's important to seal this well otherwise the molten wax will leak out. Place a skewer across the mould and secure at the edges with sticky tack. Take the wick over the skewer and fix on the outside of the mould with sticky tack or a scrap of tape to keep it taut and central.

3 When the wax has melted, carefully pour it into the mould. Leave for 5-10 minutes then carefully lift into a large bowl. Pour cold water in the bowl up to the level of the wax. You will probably need to place a weight on top of the candle mould to stop it tilting and floating in the water. After about 40 minutes, the wax will have sunk around the wick, so top it up with molten wax. Leave to set for a few hours - the timing depends on the size of the mould. Once the sticky tack has been removed, the candle should slide easily from the mould. If not, just leave it for longer.

4 Spread your pressed flowers on a tray so you can decide which to use. Brush a little découpage glue onto a candle, place your chosen flower on the glued area and smooth down gently from the centre outwards with a gluey brush. Continue adding more flowers in this way until the candle is decorated to your liking, then leave to dry fully before using.



MAKE ME
ON DAY
33

Take It Further

Why not add coloured bases to your candles?

Here's how:

- 1** Melt white wax and prepare the candle moulds as before, then pour the molten wax in the moulds but only halfway up. Place in a bowl of cold water as before and leave for about 30 minutes by which time the wax should be opaque but still look a bit spongy around the wick.
- 2** Whilst the candles are setting, melt more white wax in a separate bowl

and add a little dye in the colour of your choice. Stir gently to ensure it is well mixed. Remove the white candles from the water and top up the moulds with coloured wax. Place back in the water and leave to set before topping up the dip as before. Once the candle has fully set, remove from the mould and embellish with pressed flowers.





"For a quicker make, you can decorate shop-bought candles with pressed flowers as described"

JILL ABLAS DESIGNER



TOP TIP! NEVER MELT WAX OVER A DIRECT HEAT OR IN A MICROWAVE. OVERHEATED WAX CAN IGNITE SO TREAT IN THE SAME WAY AS A FAT FIRE. DO NOT LEAVE LIT CANDLES UNATTENDED

Embossed Card

Boost your papercrafting repertoire by adding some shimmer to your cards

KIT LIST

- ★ Acetate ★ Card: white; gold Mirri ★ Heart stamp
- ★ Ink: Tsukineko VersaMark, pink
- ★ Embossing powders: WOW! Primary Pink Robin embossing powder, Bonding Powder
- ★ Kuretaka ZIG Real Brush Pen, Light Pink
- ★ Glitter ★ Sentiment
- ★ Adhesives: 3D foam pads; repositionable; double-sided tape
- ★ Scissors ★ Heat tool
- ★ Ruler ★ Vellum
- ★ Bone folder

We say

"There's nothing like a sprinkling of glitter to add cheer to your cards!"

BEFORE YOU START

THIS DESIGN WORKS FOR VARIOUS SHAPES, SO GET OUT YOUR STAMPS AND EXPERIMENT WITH YOUR EMBOSSING POWDERS, GLITTERS, AND FOILS



1 Create a 12.5cm square blank from acetate.

Stamp a cluster of hearts repeatedly onto white cardstock, 12.5cm square, using VersaMark ink, then heat emboss with Primary Pink Robin embossing powder, creating a diagonal area of hearts.

2 Colour in some of the hearts with a light pink ZIG brush pen and water. Let it dry. Apply temporary adhesive onto the back of the heart-embossed cardstock and fix onto another piece of white card. Trim around the top of the embossed hearts and separate the two pieces of cardstock. These will be for the front panel.

3 Measure and cut out another couple of diagonal pieces of cardstock for the back panel. Adhere all four parts onto the card base and set aside. Stamp a cluster of hearts onto white cardstock and heat emboss with bonding powder. Sprinkle glitter on top, reheat, let it cool and brush off any excess.

4 Colour them in with varied effects and cut out. Secure a strip of gold mirri to a strip of vellum, cut it into a banner and adhere the cluster of hearts on top with 3D foam pads, then onto the card front along with a stamped sentiment.



"WOW! Bonding Powder dries slower than regular clear embossing powder and stays sticky long enough to add glitter or foil on top"

INGRID VICHOVA
DESIGNER

DONE IN A DAY

DESIGNER SARAH JACKMAN READ

Funfair Cards

Alice Potter's bright paper designs are perfect for these cheery cards

KIT LIST

★ Fun of the Fair paper downloads ★ Card blanks, white, 13cm x 17cm, two and 14cm x 15cm, one; peach, 12cm x 14cm ★ Card: yellow, orange, white ★ Dies: circle, oval, mini alphabet ★ Heart stickers, Papermania Shimmer ★ Mini peg ★ Acetate ★ Baker's twine ★ Sequins ★ Adhesives ★ Foam tape ★ 3D foam pads ★ Bone folder ★ Hole punch ★ Scissors

32

We say "Why not use the papers to create some coordinating envelopes for your greetings cards?"

BEFORE YOU START

KEEP YOUR OFFCUTS OF PATTERNED PAPER – YOU CAN USE PUNCHES TO MAKE SHAPES FOR OTHER CRAFTY PROJECTS

MAKE ME ON DAY 60



BIRTHDAY LOVE

1 Create a 13cm x 17cm white blank and adhere yellow card to the front. Trim fairy lights paper, 12cm x 16cm, stick to white card, then die cut a 9.5cm diameter circle through it, towards the top.

2 Fix acetate behind the aperture, then run foam tape around it. Sprinkle red sequins onto the acetate and attach striped paper face down on the foam tape to create the shaker element.

3 Cut out our *Birthday* and *Love* sentiments and adhere to the front of the shaker, using 3D foam pads behind the arrow. Trim rides paper, 4cm x 12cm, and secure at the bottom of the card. Finish with heart stickers.

HAVE FUN

- 1 Make a 13cm x 17cm top-folding white blank, then secure orange card to the front. Trim tent paper, 12cm x 16cm, fix to the card, and die cut a 13cm diameter oval through the front towards the top.
- 2 Adhere roller coaster paper inside the card. Trim three teddy bears, attach to a length of baker's twine, then hang across the top of the aperture. Add twine bows at each end.
- 3 Secure a strip of orange card behind the bottom of the aperture. Cut out coconuts and food, then attach to the orange so it shows through the front of the greeting. Die cut *Have* in white and stick to the left side of the orange.
- 4 Trim striped paper, 2.5cm x 17cm, then attach across the bottom of the card front. Wrap baker's twine around the striped paper three times and add a baker's twine bow on the right side. Cut an arrow and *Fun*, then fix under *Have* with 3D foam pads. Finish with a heart sticker on the bow.



"The motifs in this paper collection can be used on so many papercraft projects - such as scrapbook pages, artwork and journals"

CORINNE BRADD EDITOR

HAPPY BIRTHDAY

- 1 Create a 14cm x 15cm top-folding white blank, then remove a 6cm strip from the centre of the card front and replace with acetate. Adhere yellow card to the rest of the front and add rides paper inside.
- 2 Trim two pieces of striped paper, 3cm x 14cm, and fix on top of the yellow card. Wrap baker's twine around the striped paper. Cut out a pointing hand and attach towards the top-left corner of the acetate.
- 3 Cut out tents and a sentiment, then adhere across the acetate. Add a baker's twine bow in the bottom-right corner then finish with heart stickers.

BIRTHDAY WISHES

- 1 Mark the centre of the front of a 12cm x 14cm top-folding peach blank, then mark 7cm up each side. Score from the sides to the centre point and fold back to create a triangular-shaped front.
- 2 Trim candy floss paper, 11cm x 13cm, and adhere inside the card. Cut sign paper to fit the front sections, leaving a narrow border, and fix in place. Punch holes in the tops of the triangles then tie together with baker's twine.
- 3 Layer our *Birthday wishes* sentiment onto peach card, then fix to the triangles. Die cut three 5cm diameter ovals from candy floss paper, matt onto peach, and attach above the triangles with 3D foam pads. Complete with heart stickers.



DONE IN A DAY



KIT LIST

- ★ DK yarn: Dark Blue, Light Blue, Orange, Yellow
- ★ Button, orange
- ★ Tapestry needle
- ★ Knitting needles, 3.5mm
- ★ Scissors
- ★ Tape measure

Spectacles case: 9cm x 15cm

the
CRAFTS
CHANNEL

WATCH STEP-BY-STEP
CRAFTING IDEAS AND
TUTORIALS AT
[youtube.com/
thecraftschannel](https://youtube.com/thecraftschannel)

We say

"This simple unisex
design can be
knitted in colours
to suit women or
men or children"

BEFORE YOU START

WHEN WORKING THE POUCH,
CARRY UNUSED YARNS ALONG
THE RIGHT SIDE OF THE
WORK – THIS WILL KEEP
THEM HANDY FOR THE NEXT
COLOUR CHANGE, BUT GIVE A
SEAMLESS FINISHED RESULT

DESIGNER **LUCINDA GANDERTON**

Textured Spectacles Case

Knit a handy glasses pouch to gift
or keep for yourself



MAKE ME
ON DAY
60



FRONT

Using 3.5mm needles and dark blue yarn cast on 21 sts

- Rows 1-2: k
- Change to light blue yarn
- Rows 3-4: starting with a k row work in st st
- Change to yellow yarn
- Row 5: (k1, sl 1 pwise) to last st, k1

□ Row 6: (k1, yb, sl 1 pwise, yfwd) to last st, k1

Change to light blue yarn

- Rows 7-8: starting with a k row work in st st

Change to orange yarn

- Row 9: k1, (k1, sl 1 pwise) to last two sts, k2

- Row 10: k2, (yb, sl 1 pwise, yfwd, k1) to last st, k1

Change to light blue yarn

- Rows 11-58: rep Rows 3-10 six times

- Rows 59-62: rep Rows 3-6

Fasten off

Change to dark blue yarn

- Rows 63-64: k

Cast off

BACK

Using 3.5mm needles and dark blue yarn cast on 21 sts

Using dark blue yarn throughout, work as for Front

Cast off

TO MAKE UP

Sew in ends, then seam side edges. Make buttonhole loop as follows: thread tapestry needle with a length of yarn and use this to make a foundation bar of two loose 2cm sts at centre back of case. Work a line of buttonhole sts over bar, from left to right, as follows: for each st, slide needle under bar, looping thread under it. Pull through and draw up thread so that sts sit neatly in a row, cont to end of loop. Fasten off at right edge. Sew button to centre front



"I chose a
textured knitting
stitch to add
extra padding
and thickness to
the knitted fabric"

**LUCINDA
GANDERTON**
DESIGNER

Crochet Patches

Jazz up a plain cardi with a bright and fun patch

MAKE ME
ON DAY
61

KIT LIST

★ Yarn, DK: Balloon Blue, Turquoise Bunting, Jelly Red, Lime Frosting, Purple Present, Orange Confetti, Pink Lemonade (light pink) ★ Crochet hook, 3mm ★ Scissors ★ Yarn needle

Flamingo width: 18cm
Unicorn width (excl tassels): 12cm



WATCH STEP-BY-STEP CRAFTING IDEAS AND TUTORIALS AT
[youtube.com/thecraftschannel](https://www.youtube.com/thecraftschannel)

We say

"This isn't just for kids... everybody loves a unicorn!"

BEFORE YOU START

THESE MOTIFS CAN BE USED AS EMBELLISHMENTS ON SO MANY DIFFERENT ITEMS FROM BAGS TO BLANKETS



FLAMINGO BODY

Using 3mm hook and Purple Present make 4ch
 Rnd 1 (RS): 11tr in fourth ch from hook, join with a sl st to third of first 3ch. 12 sts
 Rnd 2: (3ch [counts as 1 tr], 1tr) in next st, 2tr in each st to end, join with a sl st to third of first 3ch. 24 sts
 Rnd 3: (2ch, 1htr) in next st, (1tr, 1dtr) in next st, (2dtr in next st) twice, (1dtr, 1tr) in next st, 2tr in next st, ([1tr, 1htr] in next st, 4htr, [1htr, 1tr] in next st) twice, 2tr in next st, (1tr, 1dtr) in next st, (2dtr in next st) twice, (1dtr, 1tr) in next st, 1htr, 2ch, join with a sl st to Rnd 2. 40 sts
 Fasten off

HEAD & NECK

Using 3mm hook and Purple Present make 4ch
 Rnd 1 (RS): 11tr in fourth ch from hook, join with a sl st to third of first 3ch. 12 sts
 Rnd 2: 12ch, join with a sl st to halfway point of Body, work three sl sts along Body, work along opposite ch as folls: (tr2tog) three times, 2tr in each st to end, miss two sts on Head, join with a sl st to next st. 15 sts
 Fasten off

BEAK

Using 3mm hook and Orange Confetti, join with a sl st to tip of Head
 Row 1 (RS): 1dc, 2dc in next st, turn. Three sts

Row 2: 1ch, 1dc, dc2tog, turn. Two sts
 Change to Jelly Red
 Row 3: 1ch, 2dc, turn. Two sts
 Row 4: 1ch, dc2tog. One st
 Fasten off

LEGS

Using 3mm hook and Orange Confetti, join with a sl st to underside of Body
 Row 1 (RS): 15ch, 2tr in fourth ch from hook, 3ch, join with a sl st to same st, cont along ch as folls: 6dc, 2dc in next st, 4dc, join with a sl st to Body
 Row 2: 15ch, 2tr in fourth ch from hook, 3ch, join with a sl st to same st, cont along ch as folls: 6dc, (1dc, 2ch, 1dc)

in next st, 4dc, join with a sl st to Body
Fasten off

TAIL

Using 3mm hook and Pink Lemonade make 4ch
 □ Rnd 1 (RS): 11tr in fourth ch from hook, join with a sl st to third of first 3ch. 12 sts
 □ Rnd 2: (2ch, 1htr) in next st, 2tr in next st, ([1tr, 1htr] in next st, 2htr, [1htr, 1tr] in next st) twice, 2tr in next st, 1htr, 2ch, join with a sl st to Rnd 1. 20 sts
Fasten off

WING

Using 3mm hook and Purple Present make 3ch
 □ Rnd 1 (RS): (2tr, 2htr, 1tr, 2htr, 2tr, 2ch) in third ch from hook, join with a sl st to centre. 11 sts
Fasten off

TO MAKE UP

NOTE: work in back loops only for all edging. Using Pink Lemonade sl st around Body, Neck and Head, working across join for Beak and Legs. Sl st around wing, working 2ch at bottom point. Using Purple Present, sl st around Tail, working 2ch at bottom point. Sew Tail and Wing to Body. Using Jelly Red, sl st around Legs. Sew second leg across knee of first leg. Using Balloon Blue, embroider a French knot for an eye. Weave in all ends

UNICORN HEAD

Using 3mm hook and Pink Lemonade make 4ch
 □ Rnd 1 (RS): 11tr in fourth ch from hook, join with a sl st to third of first 3ch. 12 sts
 □ Rnd 2: (3ch [counts as 1tr], 1tr) in next st, 2tr in each st to end, join with a sl st to third of first 3ch. 24 sts
Use st marker to mark first st of next rnd
 □ Rnd 3: 3ch (counts as 1tr), 2tr in next st, (1tr, 2tr in next st) to end, join with a sl st to third of first 3ch. 36 sts
 □ Row 4: (3ch [counts as 1tr], 1tr) in next st, 6tr, 2tr in next st, turn. Ten sts
 □ Rows 5-7: (3ch [counts as 1tr], 1tr) in next st, 1tr in each



"Don't want to sew them to your garment? Back with felt and add a brooch fastening to the back instead!"

SARAH-JANE HICKS DESIGNER

st to last st, 2tr in next st, turn. 16 sts
Fasten off

NOSE

Using 3mm hook and Pink Lemonade, join with a sl st to 27th tr on Rnd 3 of Head
 □ Row 1: 2ch (counts as 1htr), 9htr, turn. Ten sts
 □ Rows 2-6: 2ch (counts as 1htr), 1htr in each st to last st, miss last st, turn. Five sts
 □ Row 7: 1ch, (dc2tog) twice, miss last st. Two sts
Fasten off

EAR

Using 3mm hook and Pink Lemonade make 6ch
 □ Row 1: starting in second

ch from hook, * 1dc, 1htr, 2tr in next st, 1htr, 1dc *, 2ch, work along underside of ch as folls: rep from * to *, join with a sl st to first st
Fasten off, leaving a long tail

HORN

Using 3mm hook and Purple Present, join with a sl st to 25th tr on Rnd 3 of Head
 □ Row 1 (RS): (1ch, 1dc) in next st, 2dc, turn. Three sts
 □ Rows 2-3: 1ch, 1dc in each st to end, turn
 □ Row 4: 1ch, dc2tog, 1dc. Two sts
 □ Rows 5-6: rep Rows 2-3
 □ Row 7: 1ch, dc2tog. One st
 □ Row 8: 1ch, 1dc
Fasten off

TO MAKE UP

To make mane: using Balloon Blue, work 1dc along back of Neck and around top of Head to Horn, fasten off. Cut 10cm lengths of Purple Present, Lime Frosting, Turquoise Bunting and Balloon Blue. Using three strands at a time, loop these through every other st. Using Pink Lemonade, 1dc in each st around edge of Nose and Neck from Horn to Mane. Sew Ear to Head. Embroider eyelashes with Balloon Blue, a nostril and mouth with Purple Present, and a spiral around Horn with Lime Frosting. Weave in all ends



DONE IN A DAY

DESIGNER CORINNE BRADD

MAKE ME
ON DAY
61

Upcycled Teacup Candles

Whip up your own candles in beautiful old crockery

KIT LIST

★ Vintage china receptacles such as teacups and saucers, sauce boats, milk jugs, bouillon cups or sugar bowls
★ Saucepan
★ Pyrex jug
★ Metal spoons
★ Knitting needle(s) to match the number of wicks used
★ Paraffin wax pellets
★ Concentrated coloured wax in your chosen hue
★ Length of wick
★ Candle-making fragrances in your chosen scent
★ Scissors

We say

"If you're using a wide container, you'll need to include more than one wick so that the wax will burn evenly"

BEFORE YOU START

SCOUR LOCAL CHARITY SHOPS FOR CHEAP, BEAUTIFUL, MISMATCHED CHINA THAT WILL MAKE INTERESTING CONTAINERS FOR YOUR CANDLES



EASY
UPCYCLING
IDEA

35

1 Wash and dry the crockery, and check for any cracks as these may cause the china to break as the hot wax is poured in. Fill your chosen sugar bowl, bouillon cup or teacup to the top with cold paraffin wax pellets. Place a Pyrex jug in a saucepan of water, bring to the boil and simmer on a low heat.

2 Pour the wax pellets into the Pyrex jug and allow them to melt, stirring occasionally. Paraffin wax melts at about 60°C so take care not to overheat the wax, as it is highly flammable. While the wax melts, shave a few flakes of concentrated coloured wax into the mixture and stir until you reach the desired depth of colour.

3 Prepare the wick of the candle by cutting it to the

height of your receptacle plus 1cm. Lay a knitting needle over the top of the china then fold over 1cm at the top of the wick and hook over the knitting needle, so that the wick can stay in the centre.

4 Take a teaspoon of melted wax and pour over the bottom of the wick to secure it to the base of the cup as it cools. Remove the melted wax from the heat and stir for a minute to cool the wax without a skin forming on the top.

5 Add 1 tsp of fragrance then carefully pour into the cup or bowl. Wax shrinks as it cools, so don't pour any into your cups while it's too hot, or a dip may form in the centre. Leave the candle to cool slowly. When set, remove the needle and trim the wick to 1cm from the top surface of the candle.



"Making candles in different colours and fragrances is a great idea for gifts, and helps to put to use my collection of old containers"

CORINNE BRADD
DESIGNER



KIT LIST

★ Patterned papers, double-sided
★ Chalks or ink pads
★ Scrap paper
★ Embellishments
★ Hole punch
★ Card, white
★ Adhesives
★ Scissors
★ Foam pads
★ Ribbons
★ Scoreboard
★ Flower punch
★ Gems
★ Pencil
★ Ruler
★ Fine pen, black

the
CRAFTS
CHANNEL

WATCH STEP-BY-STEP CRAFTING IDEAS AND TUTORIALS AT
youtube.com/thecraftschannel

36

We say
"These projects use papers from Graphic 45's Bloom set, but will look fab in any floral patterns"

BEFORE YOU START

IF YOUR PATTERNED PAPERS ARE THIN AND EASILY BENT, TRY LAYERING THEM, OR APPLYING THEM TO BOTH SIDES OF A SHEET OF CARD

DESIGNER **CATHIE SHUTTLEWORTH**

Gardening Gift Set



Celebrate this green-fingered pastime with cute miniature papercrafts



TOP TIP! IF YOU DON'T HAVE DECORATIVE PAPERS, YOU COULD DRAW AND COLOUR TIMBER GRAINING ONTO PLAIN PAPER TO CREATE A WOOD-EFFECT TRUG

TINY TRUG

- 1 Copy the template and trim around the outside edge, then cut into the slits and score the dotted lines with a straight edge and a pointed tool. Using paper as a mask, buff darker chalk or stamping ink along the outside edge of each slit to suggest boards of wood.
- 2 On the trug, glue the tips of the outer tabs only, and then attach to the outside of the larger middle tab, so the edges are at right angles; the tips should be touching each other. Adhere the tips of the remaining tabs to the middle, over the top of the first tab. Glue the tabs onto the base piece and then fix

to the bottom of the trug. Trim to shorten, if required.

- 3 Prepare a narrow, long strip of paper and stick around the outside rim – join two pieces together if the paper is too short. Make another strip for the handle and glue the ends, tucking them on the inside of the rim.
- 4 Cut another long strip and fix to the inside of the trug, disguising the ends of the handle in between. Using the tags from the decorative papers, mount onto a darker background and cut around. Make a hole in the top and add ribbon. Secure to the trug. Using a flower punch, cut out different sized flowers, layer to the side and top with gems.

BOUQUET CARD

- 1 Make a white card blank, 10cm x 18cm, then add a border along the bottom using patterned paper. Cut a pot shape from decorative papers and glue to the face of the card.
- 2 Prepare an assortment of flowers and butterflies from the decorative papers. Layer them up over the pot, using stacks of foam pads to achieve differing heights. Place pads away from paper edges so they are hidden.
- 3 Add gems to the centre of the flowers and use a fine black pen to draw swirls to the white. Attach a sentiment to the top, and finish with a butterfly.

DONE IN A DAY



KIT LIST

- ★ Paper selection, up to 15 different designs
- ★ Vintage wooden planks
- ★ Batten
- ★ Nails
- ★ Staple gun (optional)
- ★ Sandpaper
- ★ Dustpan and brush
- ★ Hammer
- ★ Mounting putty
- ★ Card
- ★ Dust mask
- ★ Scissors
- ★ Rustoleum: Surface Primer, white; Painter's Touch spray, blue, green
- ★ Twine
- ★ Safety goggles
- ★ PVA glue and brush

the
CRAFTS
CHANNEL

LEARN NEW CRAFTING
TECHNIQUES AT
[youtube.com/
thecraftschannel](https://www.youtube.com/thecraftschannel)

We say
"Free-hand
draw your own
motifs to make a
variety of nature-
themed hangings"

BEFORE YOU START

BE SURE TO USE THE SPRAY
PAINTS IN A WELL VENTILATED
AREA – OUTSIDE IS IDEAL!

DESIGNER **CORINNE BRADD**

Découpage Frieze

Upcycle old wooden planks for an original piece of wall art

MAKE ME
ON DAY
75

1 Prepare your background by nailing three old, short planks to two lengths of batten to create a 'raft'. Alternatively use a rectangle of plywood and roughen the edges to give an aged effect. Smooth the surface of the background with sandpaper and brush away any dust. Prime the surface with white spray primer, applying two thin coats rather than one thick one to reduce the risk of runs in the paint.

2 Prop the background up to spray colour over the surface. Paint the centre green before adding a border of blue and spray the paint onto the surface at an angle to soften the application. Keep spraying paint of each colour onto the board until you are happy with the result. Leave to dry completely before sanding away some of the paint to reveal the white primer underneath.

3 Select papers in a variety of lights and darks. Use the templates, and trace each part of a bird onto a different paper. Cut out the shapes and temporarily assemble on a sheet of card using mounting putty. Cut out more birds, ensuring a variety in size, colour and direction.

4 Stretch two lengths of twine across the board and fix on the reverse of the wood with nails or a staple gun. Arrange the cut outs onto the board temporarily and when happy with the

TIP! CUT OUT ALL YOUR BIRD SHAPES IN ONE GO, AND PAPERCLIP THE DIFFERENT ELEMENTS FOR EACH ONE TO KEEP THEM TOGETHER



TEMPLATE
TURN TO
PAGE 142

layout, begin to glue each piece down with dilute PVA. Smooth out air bubbles as you go and ensure the pieces fit together neatly.

5 Allow the glued birds to dry before pasting around the edges of each one with more PVA to stop the papers lifting away from the surface. Coat the whole board with two thin coats of PVA to seal the design.

"You could make up different scenes with these motifs so why not make up a triptych of boards?"

CORINNE BRADD
DESIGNER



DONE IN A DAY

DESIGNER **SARA NAUMANN**

Metallic Card

Add the Midas touch to your card makes with gleaming ink effects

KIT LIST

- ★ Card: white; white glossy; green
- ★ Bone folder
- ★ Dies: Altenew, Thanks (optional)
- ★ Die cutting machine or craft knife
- ★ Inks: Ranger alcohol, blue, green, gold metallic; black
- ★ Foam adhesive tape
- ★ Bow
- ★ Sequins
- ★ Adhesives

We say "If you don't have a die cutting machine, you can papercut by hand - just keep the letter shapes simple"

40

BEFORE YOU START

IF HAND-CUTTING THE SENTIMENT, IT MAY BE EASIER TO USE INDIVIDUAL LETTERS RATHER THAN JOINED UP WRITING. BE SURE TO USE A CRAFT KNIFE WITH A NEW BLADE TO GET A CLEAN CUT

TIME TO SPARKLE

MAKE ME ON DAY 77



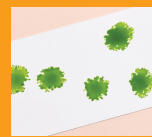
TOP TIP! WITH A LITTLE EXTRA BLENDING SOLUTION, AND A SIMPLE INK-PRESS TECHNIQUE, CREATE TWO BACKGROUNDS IN ONE GO! SIMPLY ADD INK AND BLENDING SOLUTION TO ONE PIECE OF CARDSTOCK, THEN PRESS WITH A SECOND AND LIFT

1 Form a white card blank, 10.5cm x 16.5cm. Colour glossy card, 9.5cm x 15.5cm, with blue, green and gold metallic alcohol inks as per the step panel. The more blending solution you use, the lighter and more diluted your colour will be. Glue to the front of the blank.

2 Lightly splatter black ink onto white matt card, sized 8cm x 14cm. When dry, mount the panel onto green card and fix to the greeting.

3 Die-cut 'thanks' from the second alcohol ink piece background and attach to the card with foam tape. Add a bow and sequins as shown.

INK DESIGNS



1 Drip blending solution on to glossy card, then add drops of alcohol ink.



2 Add drops of a second ink to the card. Use more blending solution if desired.



3 Next apply a few drops of metallic ink and allow the colours to blend.



4 While still wet, press a second piece of glossy card on the first to make a print.

DONE IN A DAY

DESIGNER **CORINNE BRADD**

Chalkboard Plates

Create a selection of these innovative boards to display on your kitchen wall

KIT LIST

- ★ Vintage plates
- ★ Craft knife
- ★ Masking tape
- ★ Chalkboard paint, Rust-Oleum
- ★ Bullet point pen, Posca
- ★ Ribbon
- ★ Duct tape

the
CRAFTS
CHANNEL

FIND STEP-BY-STEP
CRAFT TUTORIALS
ONLINE AT
[youtube.com/
thecraftschannel](https://youtube.com/thecraftschannel)

46

*We say
"Use these to
jot down items
to add to your
shopping list,
or why not write
inspirational
quotes on them?"*

BEFORE YOU START

MAKE SURE THAT YOUR
CRAFT KNIFE HAS A NEW
BLADE SO THAT YOUR
TEMPLATE DOESN'T HAVE
A FEATHERED EDGE



MAKE ME
ON DAY
90

1 Wash and dry a plate with a decorative border print. Fix masking tape around the edge of the plate in short overlapping sections, completely covering the border. Take a smaller plate and position it face-down in the middle. Hold in place firmly and use a craft knife to cut around the circle.

2 Remove the small plate and strips of tape to leave a circular mask. Spray the centre with chalkboard paint. Leave to touch dry before spraying a second coat in the opposite direction to the first for even coverage.

3 Allow paint to dry completely before peeling masking tape away from plate. Cut a length of matching ribbon and tie

a large bow in the centre. Fix the ends of the ribbon to the back of the plate with a couple of strips of duct tape.

TOP TIPS

- ★ Use bright chalk pens to create colourful designs that won't accidentally brush off
 - ★ Soften the hard line of the blackboard if desired by adding rows of tiny paint dots around the edge with a bullet tip pen in a coordinating colour
 - ★ Benjamin Moore offers coloured chalkboard paints in 3,500 colours, if you'd prefer something other than black!
- Benjaminmoorepaint.co.uk



WHY NOT TRY...

You could also add découpage to a plate for an original piece of wall art. Simply cut out a design from black craft paper, adhere it to the plate with PVA and then seal with a spray of lacquer

