



COLETTE SMITH

BOOST YOUR Craft Skills

Make Colette Smith's frosty snowman for a simple last-minute card this Christmas

Inside this month...



Next Level Shaker Cards



On test Cardmaking Kits



On test DIY Wreaths



We Used...

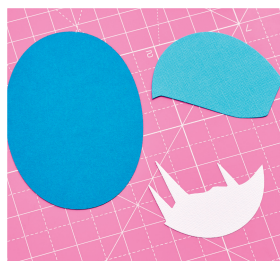
- * Cardstock, assorted colours
- * Dies: Sizzix Snowman Scene by Tim Holtz (662422); ovals
- * Gel pen, white
- * Die-cut sentiment
- * Star gem
- * Adhesives

TIPS

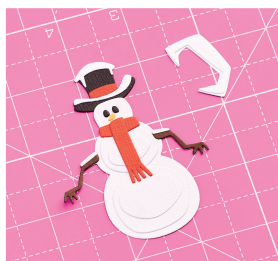
Give the card an even more modern feel by using non-Christmas/winter shades such as pinks, purple or even lime green.

Add a piece of acetate behind the aperture, line with foam tape, fill with sparkles and then back with the background to make a fun shaker card.

HOW TO Die-Cutting



1 Take three ovals, 7.5cm x 11cm. With the mountain die, cut the mid teal oval, then the tree hill from white.



2 Create the snowman elements as shown and the moon pieces from white. Assemble the snowman and moon.



3 Attach the background centrally on the card blank. Trim a pale teal panel and die-cut an oval from the top.



4 Add the decorative elements. Attach the aperture panel with foam tape and position the snowman. (C)