

Beginner
Friendly

flossie

FLAMINGO

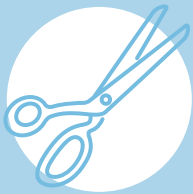
STITCH **LOUISE NICHOLS'** BRIGHT PINK PLUMAGE
THAT WILL STAND OUT FROM THE CROWD

Meet Flossie, probably the prettiest bird you'll ever make. With her movable legs and pleasing shape, this plush flamingo is an ideal gift for a little one – or a not-so-little one! These exotic birds are right on-trend this season, so your new toy is bound to be popular. With your pattern sheets to hand, use up your fabric stash and try different colours to suit the owner – how many different shades of pink can you find in your collection?



FABRIC swatch

Nothing but the prettiest pastel pinks will do for this flamingo – this blush pick from the Dashwood Twist collection has a subtle pattern running through it. £12 per metre, plushaddict.co.uk



YOU'LL NEED...

Fabric, pink: light shade; dark shade; spotty; striped; circles
Felt: black, light pink, hot pink
Embroidery thread, white
Buttons, 12mm, two
Fabric glue
Fusible webbing
Toy filling

5mm seam allowance used throughout, unless otherwise stated.

Let's get started...

FLAMINGO PLUSH

- 1 Find the templates in your bonus pattern pack. Cut out two bodies from light pink spotty fabric and two beaks from stripe fabric. Pin the beaks to one head, right sides together, matching the straight edge. Machine stitch, then press the seams open.
- 2 Using the template as a guide, cut two small circles from black felt for the eyes. Position them on the flamingo, secure with a little fabric glue, then over sew around the edges. Work a French knot in the centre of each eye using white embroidery thread.
- 3 Pin both body parts right sides together, matching the beak seams. Machine stitch around the edge, leaving a gap under the tummy for turning. Snip and trim the curves and corners, then turn through and press with an iron.
- 4 Cut two pairs of wings from dark pink spotty fabric. Using the template as a guide, draw the middle section twice onto fusible webbing, with one in reverse. Cut out and iron onto pink stripe fabric. Trim around the shape and iron into place on the wings.

- 5 Sew along the top and bottom edges of the striped section using a wide zig zag stitch. Cut two felt sections from light pink felt, position at the top of the wing and hold in place with fabric glue. Over sew around the edge. Pair the wings right sides together and stitch around the edges, leaving the straight edge along the top open for turning. Snip the curves, turn through and press. Stitch the gaps closed using coordinating thread.
- 6 Cut two 6cm x 22cm rectangles of circle print fabric. Fold in half lengthways, right sides together, and stitch across the long edge and one short side, leaving the other open. Turn out. Fill both legs with toy stuffing, then stitch across the tops. Using the template, cut four feet from hot pink felt. Pair them together, secure with a little fabric glue and blanket stitch around the edge using white embroidery thread.
- 7 Sew a foot onto the bottom of each leg, making sure the seams on the legs are facing backwards. Cut two foot circles from light pink felt, and glue them onto the bottoms of the feet to cover the stitching from attaching the legs. Over sew around the edge.
- 8 Stuff the head and neck of the flamingo. Position the wings on the

body, pin and sew into place along the top edge. Position the legs and attach with a button at the top of each one, sewing through the button so that the legs move. Continue to stuff the flamingo, then stitch the gap under the tummy closed. **M&ST**





your
GIFT



Sew Clever...

You may wish to sew the legs directly on rather than using button joints if giving to a small child



make & sew toys

FLOSSIE FLAMINGO TEMPLATES

Use these guides to get started today

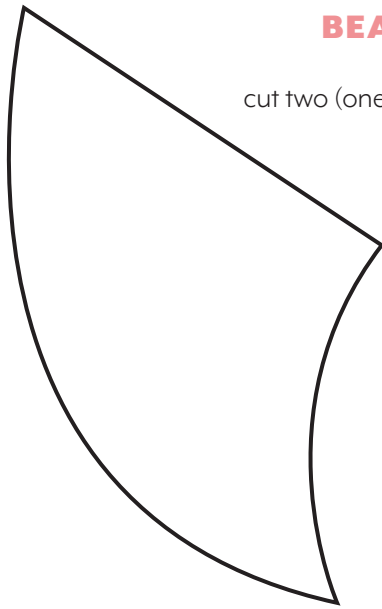


Print
Out &
Keep

IN YOUR PRINT MENU, UNDER SIZE OPTIONS, BE SURE TO SELECT '100%' or 'ACTUAL SIZE', INSTEAD OF 'FIT TO PAGE'

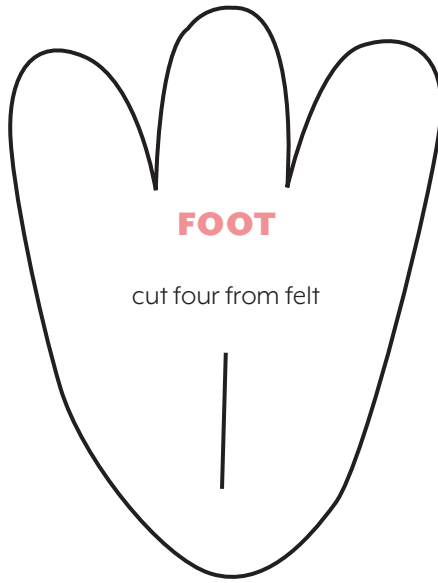
© ACEVILLE PUBLICATIONS LTD | MAKEANDSEWTOYS.COM

All projects, templates and patterns are for personal home use only and cannot be sold or used for commercial purposes



BEAK

cut two (one reversed)

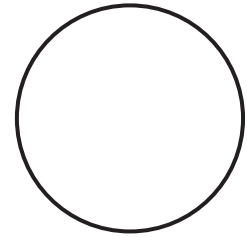


FOOT

cut four from felt

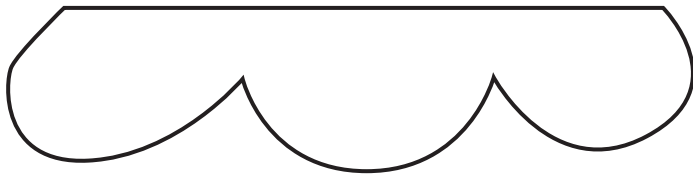
FOOT CIRCLE

cut two



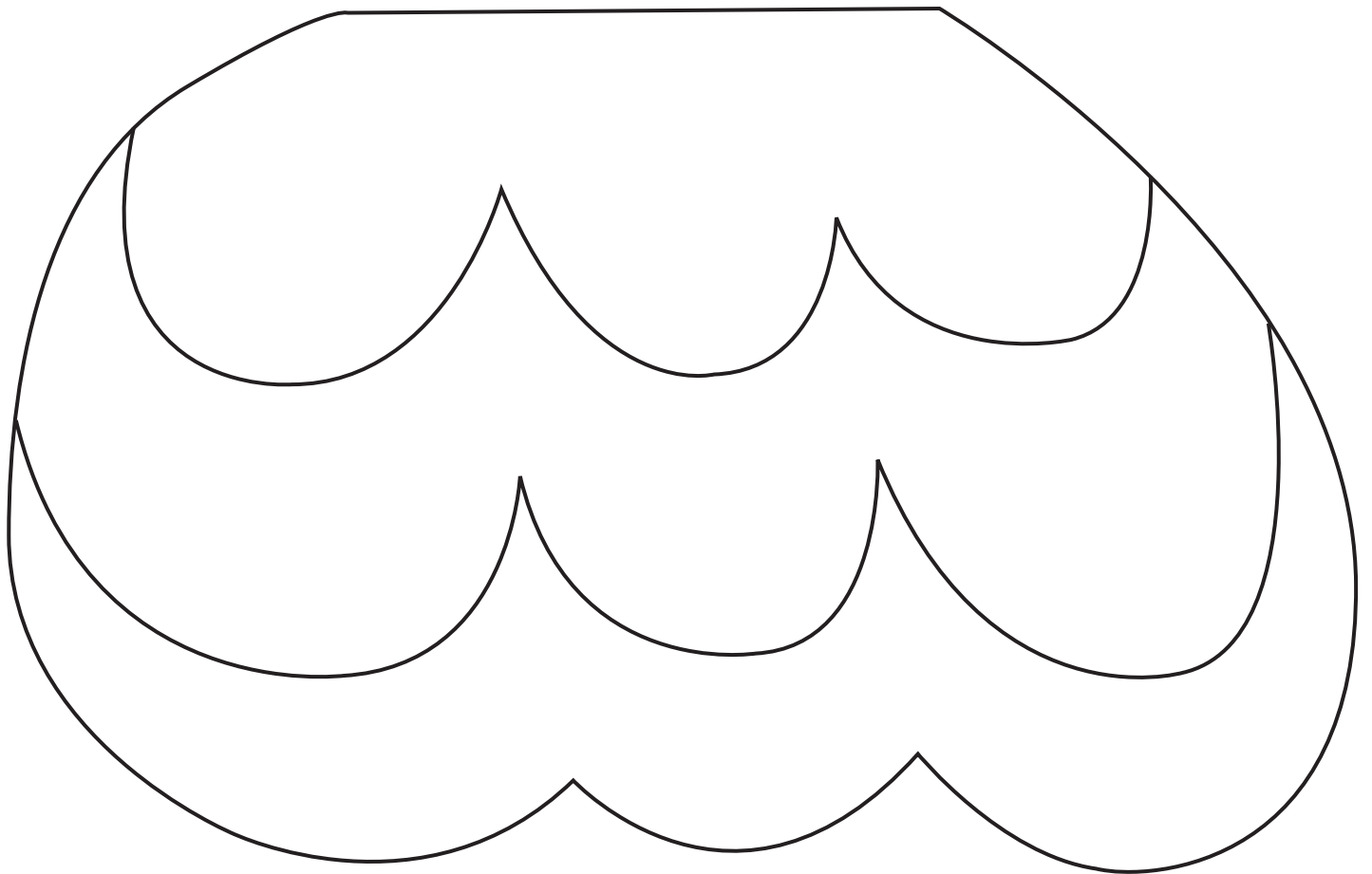
TOP WING

cut two (one reversed) from felt



MIDDLE WING SECTION

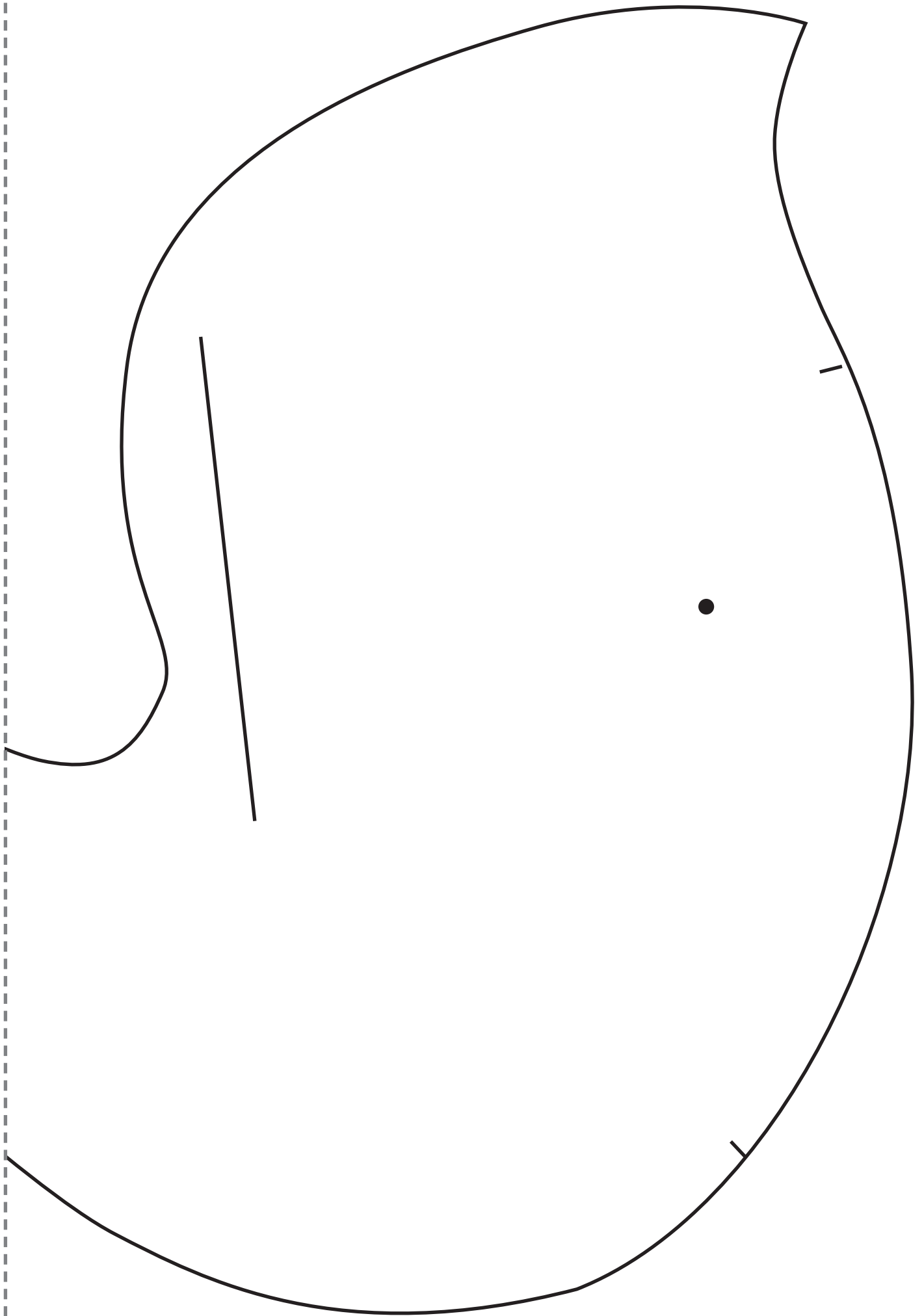
cut two (one reversed)

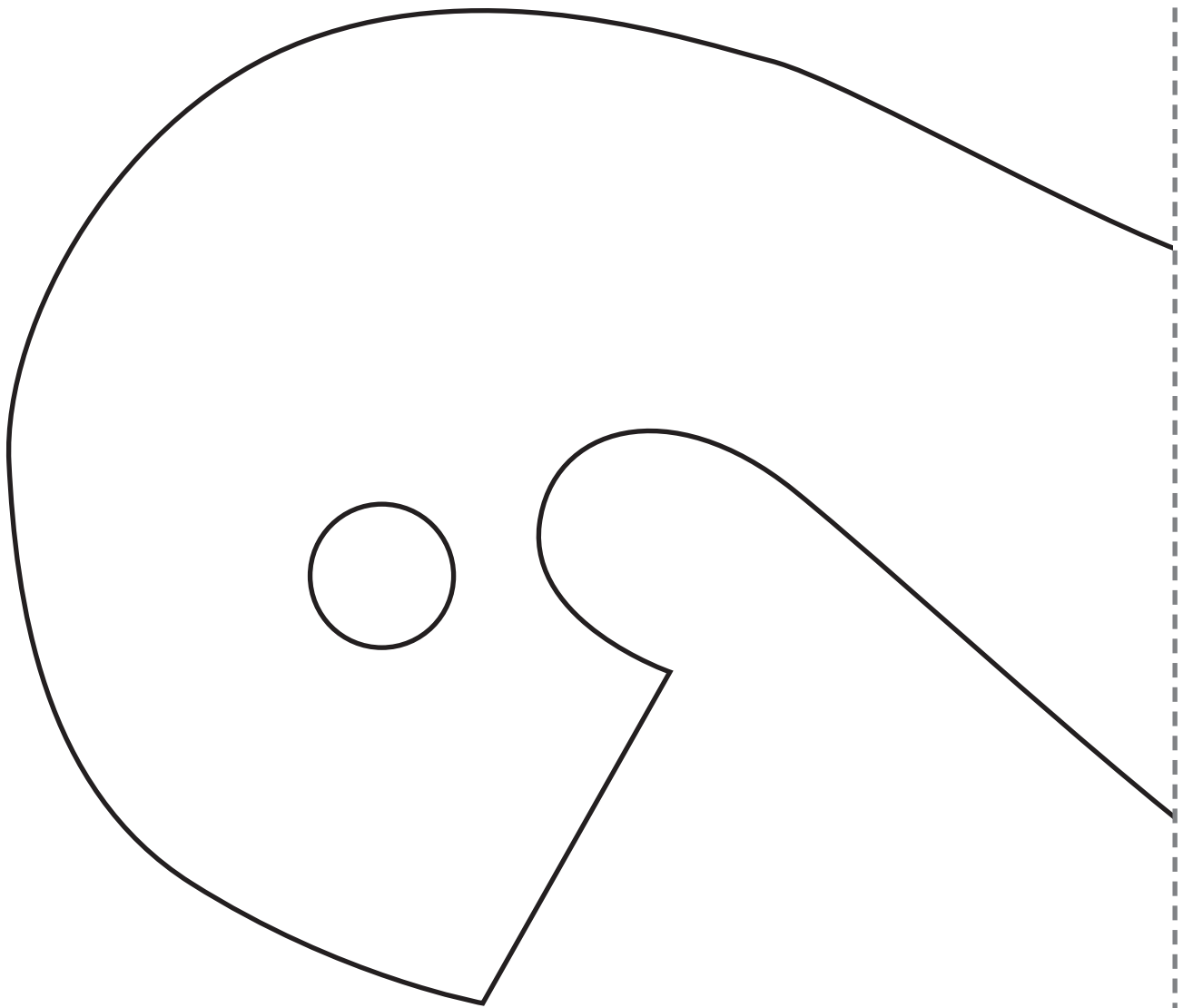


WING

cut four whole wings (two reversed)

join line





Join line